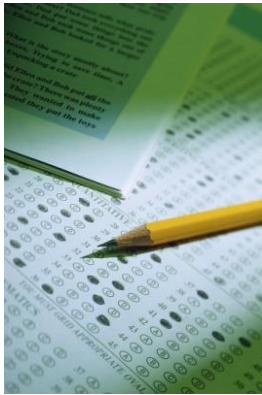


# TEST PREPARATION FOR GRADUATE SCHOOL

As you are ready to venture ahead, beyond your undergraduate career? There are many things that you must consider if you are planning to apply to a graduate and post-graduate program. One of the main considerations involves the type of entrance exam required by the program and how you should prepare for it.



## Entry Exams

- ✓ **DAT** (Dental Admissions Test)
- ✓ **GMAT** (Graduate Management Admissions Test)
- ✓ **GRE** (Graduate Record Examinations General Test)
- ✓ **LSAT** (Law School Admissions Test)
- ✓ **MAT** (Miller Analogies Test)
- ✓ **MCAT** (Medical College Admissions Test)
- ✓ **OAT** (Optometry Admission Test)
- ✓ **PCAT** (Pharmacy College Admission Test)
- ✓ **PRAXIS** (Teacher Licensure and Certification Exam)
- ✓ **TOEFL** (\*Test of English as a Foreign Language)

| <u>Field of Study</u>     | <u>Required Exam</u> |
|---------------------------|----------------------|
| Architecture and Planning | GRE                  |
| Biological Sciences       | GRE                  |
| Business                  | GMAT                 |
| Dentistry                 | DAT                  |
| Education                 | GRE/PRAXIS           |
| Engineering               | GRE                  |
| Humanities and the Arts   | GRE                  |
| Law                       | LSAT                 |
| Medicine                  | MCAT                 |
| Optometry                 | OAT                  |
| Pharmacology              | PCAT                 |
| Physical Sciences         | GRE                  |
| Psychology                | GRE/MAT              |
| Social Sciences           | GRE                  |

\* For international students applying to a graduate program in the United States, program requirements include taking the **TOEFL**  
(unless otherwise specified by the school)

## SPECIFIC TESTING INFORMATION AND RESOURCES

- ◆ If you are preparing to take the **DAT**, please visit <http://www.ada.org/dat.aspx> for information on taking the exam, guidelines for scheduling and preparing for the exam, fees, testing centers, practice tests, scoring information and more.
- ◆ If you are preparing to take the **GRE**, please visit [www.gre.org](http://www.gre.org) for a listing of a variety of programs available either for FREE or for a small fee that will assist you in preparing for the exam.
- ◆ If you are preparing to take the **GMAT**, please visit <http://www.mba.com/us/the-gmat-exam/prepare-for-the-gmat-exam.aspx> for a listing of FREE test prep software that will help you prepare for the exam. It will also provide you with helpful test taking strategies.
- ◆ If you are preparing to take the **LSAT**, please visit [www.lsac.org](http://www.lsac.org) for further information on the exam, including the format, registration procedures, fees, and testing centers.
- ◆ If you are preparing to take the **MAT**, please visit [http://www.pearsonassessments.com/postsecondaryeducation/graduate\\_admissions/mat/prepare\\_mat.html](http://www.pearsonassessments.com/postsecondaryeducation/graduate_admissions/mat/prepare_mat.html) for information about the exam, fees and testing centers, online practice tests, downloadable candidate information booklet and more.
- ◆ If you are preparing to take the **MCAT**, please visit <https://www.aamc.org/students/applying/mcat/> for advice on taking the exam, scheduling and registration, advisor information, testing centers, practice tests and more.
- ◆ If you are preparing to take the **OAT**, please visit [www.opted.org/](http://www.opted.org/) for the online registration guide for the exam and <https://www.ada.org/oat/index.html> for practice tests, fee information, scheduling, testing services, tutorials and more.
- ◆ If you are preparing to take the **PCAT**, please visit [www.pcatweb.info/](http://www.pcatweb.info/) for support and resources about the exam, registration information, testing centers and services, fees, practice tests, application process and more.
- ◆ If you are preparing to take the **PRAXIS** (I, II) series, please visit [www.ets.org/praxis/](http://www.ets.org/praxis/) for further information about the exam, state testing requirements and more.
- ◆ If you are preparing to take the **TOEFL**, please visit <http://www.toeflgoanywhere.org/> for a listing of universities in the United States and abroad, information about the exam, practice tests, registration,

products and services to help you prepare for the exam and more.

## ADDITIONAL CAMPUS RESOURCES



Please do not hesitate to contact the **College of Charleston Career Center** for counseling or advice on preparing for your exam. Please visit our website: [careercenter.cofc.edu](http://careercenter.cofc.edu). We also have a wide variety of reading material that would be of great assistance to you. *So please feel free to stop in to browse our library of resources.*

**Location:** Lightsey Center, Room 216, 160 Calhoun St. Charleston, SC  
**Phone:** (843)953-5692 **Fax:** (843)953-6341 **Email:** [CareerCenter@cofc.edu](mailto:CareerCenter@cofc.edu)

**Office Hours:** 8:30 - 5:00 pm, Monday - Friday. Call for an appointment.  
**Drop In Hours:** 1:00 - 4:00 pm, Monday- Friday (for quick questions only, approximately 15 minutes or less)



You may also visit the **Center for Student Learning** for free test preparation. The center is located inside the Addlestone Library (1<sup>st</sup> floor). **They offer small group and individual preparation for most postgraduate and professional tests.** Please visit <http://csl.cofc.edu> for specific test information and available meeting times.

**Office Hours:** 8:30 – 5:00 p.m., Monday - Friday [**Summer Hours vary**]  
**Phone:** (843) 953-5635 **Fax:** (843) 953-5798



**Pre-Law Advisor, Professor Larry Krasnoff**, has a variety of resources to help you learn more about the field of law; choosing a school; and the application process. Please visit <http://prelawadv.cofc.edu> for further information.

**Email:** Professor Krasnoff at [krasnoff@cofc.edu](mailto:krasnoff@cofc.edu) **Phone:** (843) 953-4987



**Pre-Health Profession Advisor, Director Karen Eippert**, is available to all students interested in entering a healthcare field from the time they arrive on campus through graduation. Please visit <http://www.cofc.edu/academics/majorsandminors/pre-health.php> for further information about Pre-health professions and advisor information per department.

**Email:** [eippertk@cofc.edu](mailto:eippertk@cofc.edu)  
**Phone:** Director Karen Eippert for an appointment at (843) 953-6460.

## OTHER TESTING AND PREPARATORY SERVICES

[www.ETS.org](http://www.ETS.org) (Educational Testing Service for **TOEFL and GRE**)

[www.PrincetonReview.com](http://www.PrincetonReview.com) (Resource for all exams except **OAT and DAT**)

[www.kaplan.com](http://www.kaplan.com) (Kaplan Testing Service)

[www.powerscore.com](http://www.powerscore.com) (**LSAT, GMAT, GRE and SAT** testing resource)

<http://novapress.net/> (Software **GMAT, GRE, LSAT, MCAT, TOEFL & SAT**)

[www.testmasters.com](http://www.testmasters.com) (**For LSAT**)

[www.gorillatestprep.com](http://www.gorillatestprep.com) (**LSAT, GMAT, MCAT, GRE**)

[www.deltacourse.com](http://www.deltacourse.com) (**GMAT**)

<http://www.stuff.co.uk/toefl.htm> (Online practice exercises for **TOEFL**)

[www.studyguidezone.com](http://www.studyguidezone.com) (Resource Guide for **ALL** mentioned exams)

[www.testprepreview.com](http://www.testprepreview.com) (Online Practice Tests for **ALL** mentioned exams)

[www.gradview.com/testprep/](http://www.gradview.com/testprep/) (Excellent Resource for **ALL** mentioned exams)

<http://www.praxisprep.com> (**PRAXIS** exam secrets and study guide)

Still having concerns?



***Always remember that your professor or advisor can be of assistance to you as you prepare for the exam that is related to your field of study. Do not hesitate to ask them for advice because they can be a great resource in this phase of your academic career.***